

2023 **ACT**  
**PLAY**  
symposium

**CANBERRA:**  
THE LABORATORY  
OF THE POSSIBLE

**WELCOME**

**12 JULY 2023**



# Acknowledgement of Country

The University of Canberra acknowledges the Ngunnawal people, traditional custodians of the lands where the ACT Play Symposium is held. We acknowledge and respect their continuing culture and contribution they make to the life of Canberra and the region. We also acknowledge all other First Nations Peoples on whose land we gather.

Sovereignty was never ceded.

# Your Safety and Care

Play Symposium on Superfloor (sessions and morning tea)  
Lunch and Moodshift on ground floor  
Bathrooms on every floor  
Water and hot beverages available throughout day  
In case of emergency – lifts and stairs. Follow staff instructions  
Morning tea and lunch provided by Gather Catering  
Other food options in Kambri if sandwiches/salads not to your liking  
Any queries or needs ask Belinda, Rose or Jen – they will be happy to help

# The magical ‘#’ and ‘@’

#playsymposium #unchartedterritory #unicbr

@unicanberra @uc\_artsdesign @unchartedterritory\_cbr @uc\_cccr  
@suburbanlandagency



# The not so magical registration site



# What is the Play Symposium?

## HOMAGE

Play: its qualities and capabilities

The people and practices that draw on play to improve our lives, cultures, environment

The power and value of collaboration

Canberra - the laboratory of the possible

The magnificent humans who make this city and this country what it is

## OPPORTUNITY

To think about and see things differently - approaches, practices, collaborations, possibilities

To hear from different voices at the intersections of different disciplines, industries, communities

To make the most of the possibilities for you and for this city

To connect with old and new faces

To enjoy yourself – you totally deserve it!



# What is the Play Symposium?

## PRESENTATIONS

23 presentations over 3 days

Local, interstate and 'across the pond' speakers

## ACTIVITIES

Play Personality

Moodshift (Connect) at lunch

Sensory play kit

Ms Constance Spry's letter writing service

Speaker activities

## CONNECTING

Say hi to a matching or different play personality, or anyone new

Connect over morning tea or lunch time activity





# Who is supporting it?



The Centre for Creative and Cultural Research, Faculty of Arts and Design  
Engagement /Communications



Creating great places where communities thrive.  
Delivering sustainable urban environments that bring people and businesses together, and help our community and natural environments thrive.



Canberra's new arts and innovation festival  
Across 70 events over 10 days, the work of artists, entrepreneurs, and researchers will intersect to push the boundaries of what is possible.



UT Strategic Partner  
Venue, logistical support

# Thank you



Nicola Plunkett-Cole



Yolande Norris



Rachel Gould

# Thank you

# PLAY ACT

activation network

The Play Activation Network ACT is an informal collective of people from diverse sectors –including creative, cultural, educational, health and environmental – who draw on play to enhance engagement, vibrancy, transformation and wellbeing.



# Thank you Play Symposium Advisory Group



Deb  
Cleland



Tam  
Connor



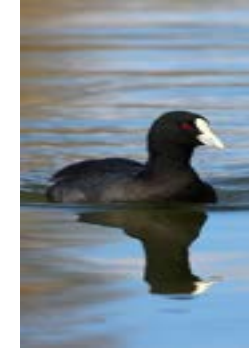
Erin  
Hinton



Justin Kalinowski  
Schilg



Nicola  
Lambert



Lavanna  
Neal



Ruth  
O'Brien



Veronika  
Pasalic



Lisa  
Petheram



Alison  
Proctor



Rose  
Ricketson



Denise  
Thwaites



Jen  
Webb



# Thank you



Rose Ricketson



Jen Mance

# Thank you



Before-kids shot.

Game 1:  
Where's after-kids  
Nick?'

# Thank you You!

You are passionate  
players in and for this  
city.

You have and can  
continue to contribute  
Canberra as the  
laboratory of the  
possible.



We draw on your  
expertise and  
experience:

Light bulb moments  
Play Personality cards  
– playing in Canberra  
Participation in  
activities  
Symposium survey



# What is Play?

- **Invites and welcomes us**
- **Engages and connects us** with each other, place, activities, ideas
- **Enables and activates** us to do things – physical, intellectual, creative, imaginative, experimental
- **Makes the ordinary extraordinary**





# What is Play?

- Play allows us to operate at the intersections between the rules, and what is possible.
- Play enables transformation (of rules, of experience)





# What is play?



Play enables us to experiment, test and trial

Play is a mechanism for developing skills and knowledge

Play improves wellbeing





# What is play?

Play makes the ordinary  
extraordinary



# Playing on Ngunnawal country



2023 ACT  
**PLAY**  
symposium

**SPEAKER**

**AUNTY TINA BROWN**  
Ngunnawal Elder  
Playing on Ngunnawal country

12 JULY



# Transforming cities through creative play



2023 ACT  
**PLAY**  
symposium

**SPEAKER**  
**RYAN REYNOLDS**  
Gap Filler

12 JULY  
From City in Crisis to City of Play: Creative place-making in Ōtautahi (Christchurch), New Zealand



2023 ACT  
**PLAY**  
symposium

**SPEAKER**  
**KATE FINNERTY**  
Gap Filler

12 JULY  
From City in Crisis to City of Play: Creative place-making in Ōtautahi (Christchurch), New Zealand



Suburban Land Agency



Suburban Land Agency

## Q & A





# Recess: 11.30 – 12.00



# Playful activation for social and environmental change



2023 ACT  
**PLAY**  
symposium

**SPEAKER**

**GEORGIA POLLARD**  
Kandos School of Cultural Adaptation

12 JULY  
Win/Win: cultural adaptation through play

UNIVERSITY OF CANBERRA | UNCHARTED TERRITORY | ACT | Suburban Land Agency



2023 ACT  
**PLAY**  
symposium

**SPEAKER**

**EMMANUELA PRIGIONI**  
Kandos School of Cultural Adaptation

12 JULY  
Win/Win: cultural adaptation through play

UNIVERSITY OF CANBERRA | UNCHARTED TERRITORY | ACT | Suburban Land Agency



2023 ACT  
**PLAY**  
symposium

**SPEAKER**

**LEANNE THOMPSON**  
Kandos School of Cultural Adaptation

12 JULY  
Win/Win: cultural adaptation through play

UNIVERSITY OF CANBERRA | UNCHARTED TERRITORY | ACT | Suburban Land Agency

# Playful activation for social and environmental change

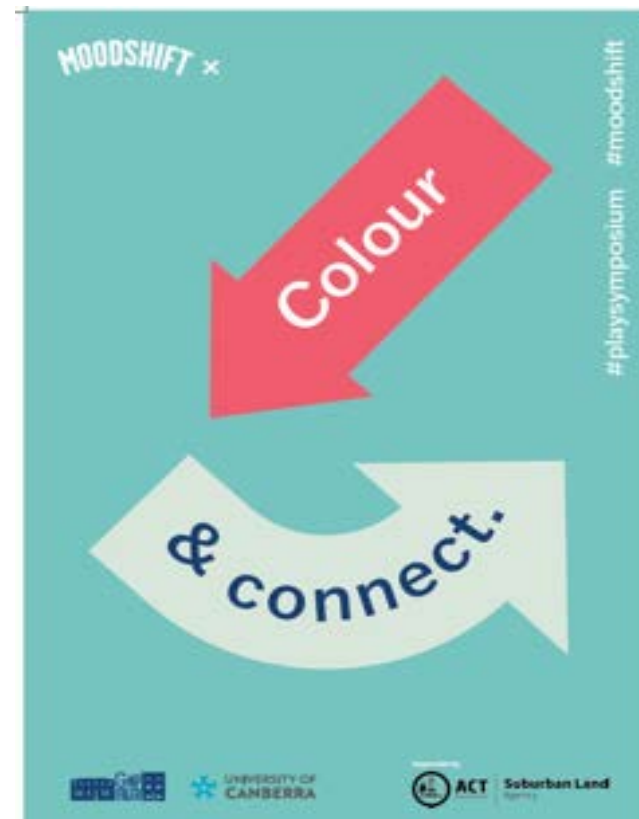




## Q & A



# Lunch and Moodshift: 1.30 – 2.30





# Play to improve wellbeing



2023 ACT  
**PLAY**  
symposium

**SPEAKER**

**DEBRA CUSHING**  
Faculty of Engineering, QUT

12 JULY  
Designing for wellbeing –  
re-designing the unremarkable

# Play to improve wellbeing



2023 ACT  
**PLAY**  
symposium

**SPEAKER**  
**MISSY GILBERT**  
UnitePlayPerform  
Creating wellbeing universes

12 JULY

# Play to improve wellbeing



2023 ACT  
**PLAY**  
symposium

**SPEAKER**

**ROBIN DAVIDSON**  
Rebus Theatre

12 JULY  
Systems of sanity: play and mental health



## Q & A





# TOMORROW IS AWESOME!

How our local African communities play, intergenerational play, Youth play takeover, how to activate for young people

+

Ms Constance Spry's letter writing service

+

Moodshift Stay Active – Slow Mo Cricket (Pablo Latona)